

USER'S OPERATION MANUAL

A Reliable Friend To Help You Capture The Precious Moments Of Life

Inside this manual has all the information you require for using this digital camera. We would like to ask you to read it very carefully first so you will learn how to use the camera properly and make it the best digital camera you have ever had.





Table Of Contents

What You Should Know Before You Take Pictures	3~24
1.FCC Warning	3
2.Safety Notes	4
3.Accessories Included	6
4.Guide To Components	7
5.Load The Batteries	10
6.Attach The Wrist Strap	12
7.Insert And Remove The SmartMedia™ Card	13
8.Flash Mode	14
9.Working Mode	15
10.Working Mode Menu	17
Take Pictures	25~26
Install The Driver	27~28
Install MGI PhotoSuite III SE	29~30
Download The Stored Images To The PC	31~33
How To Edit The Stored Images Using MGI PhotoSuite III SE	34~47
Before You Contact The Service Center	48~49
Specifications	50~51



What You Should Know Before You Take Pictures

FCC Warning

- This device has been tested in accordance with the limits of a class B digital device under item 15 of FCC rules. These limits are designed to provide protection against harmful interference in commercial installation. This equipment generates, absorbs and can emit radio frequency energy. If it is not installed and used in accordance with the instructions, it may cause harmful interference to radio communication. There is however, no guarantee that interference will not occur in a some situations. Should any interference occur when this device is in operation, please try one or more of the following measures.
 - Change the location and direction of any aerial.
 - Increase distance between camera and affected device.
 - Use a different socket away from the affected device.



What You Should Know Before You Take Pictures

Safety Notes

- Do not attempt to modify this camera in any way. This may cause a fire or electric shock or severe damage to the camera.
- Do not use the flash in close proximity to the people or animals. Positioning the flash too close to your subject's eyes may cause eyesight damage. Do not attempt to photograph children using flash, closer than 1 meter proximity.
- When taking photographs, never point the lens of the camera directly into very strong light. This may result in permanent damage to the camera or your eyesight.
- Please do not use this product in close proximity to flammable or explosive gases, as this could increase the risk of explosion.
- For safety reasons keep this product and accessories out of reach of children or animals to prevent accidents e.g:
 - Swallowing batteries or small camera accessories.
In case of accidents, please consult a doctor immediately.
 - There is a risk of permanent eye damage if the flash is operated at a distance of less than one meter from a person's eyes.
 - There is a possibility of injury from camera's moving parts.
- Should any form of liquid enter the camera, do not use it. Switch off the camera, and then disconnect the power source (batteries or AC Power Adapter). Do not continue to use the camera as this may cause a fire or electric shock.
- Do not insert or drop metallic or inflammable foreign objects into the camera through access points e.g. Card slot and battery chamber. This may cause a fire or electric shock.
- Do not operate this camera with wet hands. This could pose a risk of electric shock.



What You Should Know Before You Take Pictures

Safety Notes

- Do not leave this camera in places subject to extremely high temperatures, such as in a sealed vehicle, direct sunlight or other places of extreme variances in temperature. Exposure to extreme temperatures may adversely affect the camera's internal components and could cause a fire.
- Always use the camera and its accessories in a well-ventilated area. Leakage, overheating, or burst batteries could result in fire or injury. Do not short circuit, heat or dispose of batteries in fire. Do not use old batteries with new ones, or mix brands of batteries. Ensure the batteries are positioned correctly with regard to polarity (+/-).
- When the camera is not in use for long periods, always unplug the camera from its power source (batteries or AC Power Adapter) for safety purposes. Leaking batteries can cause fire and pollution to the environment.
- Allowing dust to accumulate in the camera over a long period is hazardous as extreme circumstances may cause a fire. It is best to clean your camera prior to seasonal periods of high humidity.
- Do not move the camera while it is switched on if you are using the AC Power Adapter. After use, always switch off the camera before unplugging the adapter from the DC Power wall socket. Then make sure that any connector cords or cables to other devices are disconnected before moving the camera. Failure to do so may damage the cords or cables and cause a fire or electric shock.

What You Should Know Before You Take Pictures

Accessories Included

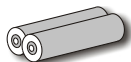
1. Digital camera



2. Driver (For Windows 98/98SE/2000)



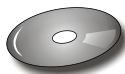
3. 2 pcs of AA battery



4. Camera pouch



5. MGI software/CD ROM



6. User's manual



7. USB cable



8. Video cable



9. Wrist strap



10. Quick start guide



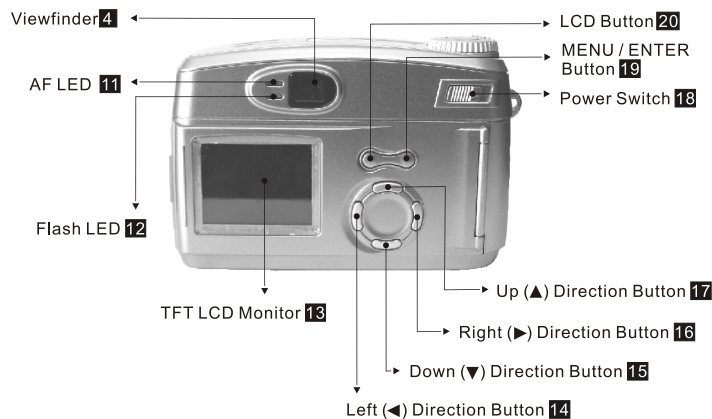
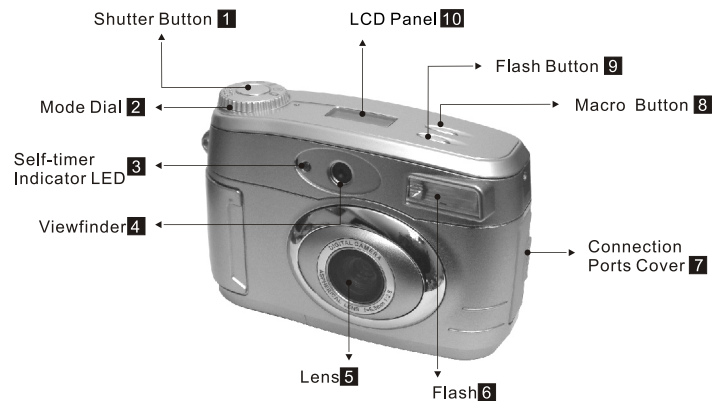
11. SmartMedia™ card



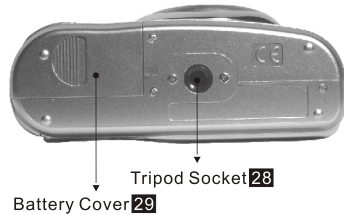
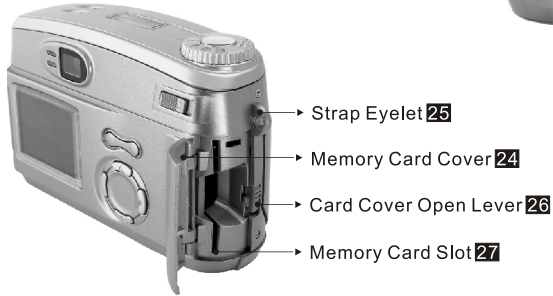
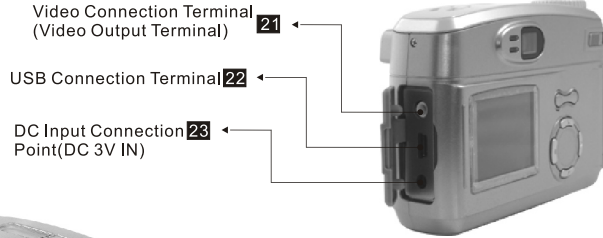
What You Should Know Before You Take Pictures

Guide To Components

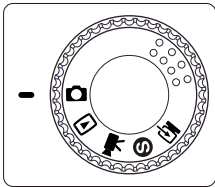
Camera Body



What You Should Know Before You Take Pictures



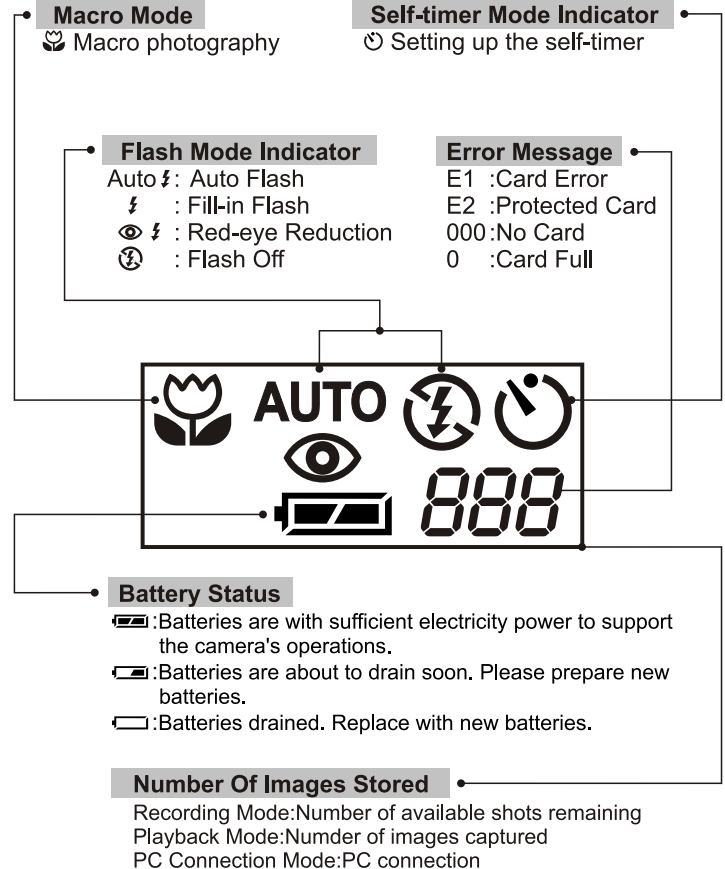
Mode Dial



- Recording Mode (📷)
- Playback Mode (▶)
- Video Mode (📹)
- Setup Mode (⚙️)
- PC Connection Mode (💻)

What You Should Know Before You Take Pictures

LCD Panel Indicator



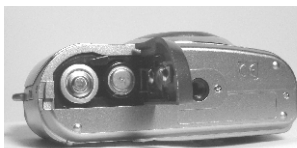
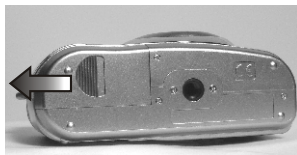
What You Should Know Before You Take Pictures

Load The Batteries

There are two ways to supply power to the camera which are 2 pcs of AA battery (Alkaline or Ni-MH) or an AC adapter (3V/2.0A).



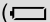
■ If batteries are used:

1. Open the Battery Cover **29**.
2. Load the batteries into the battery chamber following the polarity indications(+,-).
3. Close the Battery Cover **29** until you hear a click sound.



Note

On the LCD Panel **10** you can see the battery status as below:

- () Batteries are with sufficient electricity power to support the camera's operations.
- () Batteries are about to drain soon. Please prepare new batteries.
- () Batteries drained. Replace with new batteries.

What You Should Know Before You Take Pictures

■ If an AC adapter is used:

1. Make sure the AC adapter is 3V/2.0A.
2. Plug the AC adapter into the DC Power Terminal **23**.

Note

- Batteries may lose electricity power if kept inside the camera for a long time without using. Please remove the batteries if the batteries are expected not to be in use for a long period.
- Do not use manganese batteries as they cannot supply sufficient power to support the camera's operations.
- Batteries may not be able to work normally under 0°C.
- Please avoid using the TFT LCD Monitor **13** if possible. Using TFT LCD Monitor **13** will need considerable electricity power which may drain the batteries sooner than expected.
- Do not mix to use old and new or different types of batteries.
- It is normal that the temperature of the camera body rises when used for a long period.
- It is suggested to use an AC adapter if you expect to use the camera for a long period.
- Please make sure the AC adapter meets the specification requirement which is 3V/2.0A.
- Please make sure to switch off the power first before you unplug the AC adapter from the camera.

What You Should Know Before You Take Pictures

Attach The Wrist Strap

- Please follow the illustrations.



What You Should Know Before You Take Pictures

Insert And Remove The SmartMedia™ Card

■ Insert The SmartMedia™ Card

- (1) Pull down the Card Cover Open Lever **26**.
- (2) Insert the SmartMedia™ card.
- (3) Close the Memory Card Cover **24** until you hear a click sound.



■ Remove The SmartMedia™ Card

- (1) Switch off the power.
- (2) Pull down the Card Cover Open Lever **26**.
- (3) Remove the SmartMedia™ card and close the Memory Card Cover **24** until you hear a click sound.



Note

If a new SmartMedia™ card is used, you'll have to format it first. Please refer to page 22 for details.

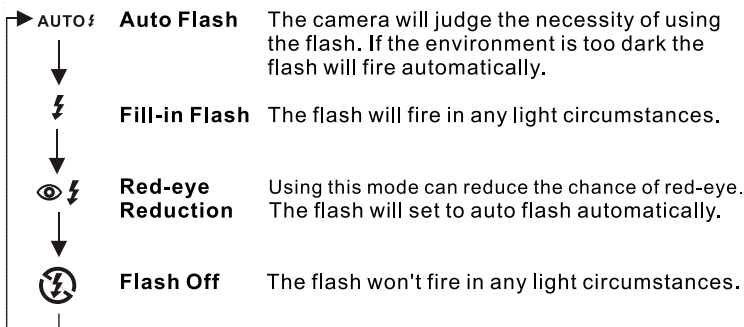
Note

- Images stored in the SmartMedia™ card may be ruined or damaged if you turn off the camera while it is in process of reading, formatting...etc.
- SmartMedia™ cards are a delicate electronic device. Please do not bend or drop it and please avoid any strikes.
- Please do not place the SmartMedia™ card in or near to an environment of strong electronic or magnetic fields such like loud speakers or TV receivers.
- Please avoid using the camera in high or low temperatures.
- Please keep the camera away from dirt, sand and water or substances that may cause malfunction of the memory card.
- Please clean the camera with a soft cloth.
- Please keep the SmartMedia™ card in its plastic bag when it's not in use. It's normal that the SmartMedia™ card may get warm after use.
- Please make sure you switch off the power before you remove the SmartMedia™ card.

What You Should Know Before You Take Pictures

Flash Mode

Please press the Flash Button **9** to select the flash modes.



Note

When the flash is charging, the Flash LED **12** will blink. When it stops blinking it means the flash is charged and is ready for shooting.


Under normal operating conditions, the charging time for the flash is less than 10 seconds. Yet if the batteries are weak, the charging time will be longer.




What You Should Know Before You Take Pictures


Working Mode


There are 5 workings modes of this camera to choose which are:

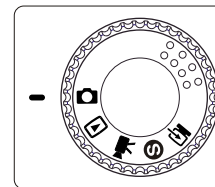
■ **Recording Mode**()
This mode is used to capture still images. Please set the Mode Dial **2** at this mode if you would like to capture still images. The normal focus range is 0.6m~infinity. Yet if you would like to take a close-up shot please press the Macro Button **8** which the focus range is 0.2m~0.6m.

■ **Playback Mode**()
This mode is used to display the stored image(s) or video(s) on the TFT LCD Monitor **13** or an external monitor. When the Mode Dial **2** is set at this mode, the last captured image will show on the TFT LCD Monitor **13** or an external monitor.

If you are willing to show the stored image(s) or video(s) on an outer monitor or TV please connect the camera with the outer monitor or TV via the video cable included in the kit. Thus the outer monitor or TV will replace the TFT LCD Monitor **13** as the display screen. There are two video output signals to choose which are NTSC or PAL. Please note that if TV is used as the display screen please make sure you set it at AV channel. If the picture is not positioned in the center of the screen, please use the TV OSD (On Screen Display) or Menu to adjust.

■ **Video Mode**()
This mode is used to capture videos.

■ **Setup Mode**()
This mode is to set up the following items:
--Date/Time
--LCD Brightness
--Video Mode
--Beep
--Reset To Default
--Language



■ **PC Connection Mode**()
This mode is used to download the stored image(s) or video clip(s) to the PC.

What You Should Know Before You Take Pictures

Note

Under PC Connection Mode, you will not be able to use any other functions or modes. If you set the Mode Dial to another mode, the camera will stop the connection with the PC even when the USB cable is still connected to both sides.

What You Should Know Before You Take Pictures

Working Mode Menu


The following options are available on the TFT LCD Monitor **13** by pressing MENU/ENTER Button **19**.

It is important that the correct mode is selected on the Mode Dial **2** before you attempt to operate.

Mode	Description	Item
Recording Mode	Quality EV Compensation White Balance Resolution Self-timer Digital Zoom	Superfine Fine Normal -1.8 ~ -1.3 ~ 0 ~ +1.3 ~ +1.8 AUTO DAYLIGHT FLUORESCENT TUNGSTEN 2048 X 1536 1600 X 1200 800 X 600 OFF ON OFF ON
Playback Mode	Slideshow Picture Information Thumbnail Erase DPOF Digital Zoom Exit	2 4 6 8 10 ON OFF OFF ON OFF ON Quantity : 0, 1, 2, 3, 4, 5, 6, 7, 8, 9 OFF ON
Video Mode	Recording time	5 10 15 20
Set up	Date / Time LCD Brightness Video Interface Beep Rest to Default Language	dd-mm-yyyy (01-01-2001) hh:mm AM/PM darker ← -- → brighter NTSC PAL ON OFF OFF ON ENGLISH DEUTSCH FRANÇAIS ESPAÑOL KOREAN CHINESE
PC Connection Mode		Please connect the camera with your PC using the USB cable for image download

What You Should Know Before You Take Pictures

Recording Mode Menu

Set the Mode Dial **2** at Recording Mode() and press the MENU/ENTER Button **19**. Use the Up **17** and Down **15** Direction Button to choose the item you would like to make change and use the Right **16** & Left **14** Direction Button to change the setting. And after that please press MENU/ENTER Button **19** to confirm the setting.

■ Quality

The symbol "★★★" means "Super Fine" quality which means low compression rate.

The symbol "★★" means "Fine" quality which means normal compression rate.

The symbol "★" means "Normal" quality which means high compression rate.

■ EV Compensation

This feature allows you to increase or decrease the exposure compensation value. The higher the exposure compensation value is the brighter the image will be. The set EV value will stay until the power is off. When the power is back on, the value will return to 0 EV automatically.

What You Should Know Before You Take Pictures

■ White Balance

The camera is preset at "Auto" if you are not capturing the images in special light conditions. There are four modes to select which are:

Auto
Daylight
Fluorescent
Tungsten

■ Resolution

There are three resolutions for you to select which are 2048 x 1536(by interpolation), 1600 x 1200 and 800 x 600.

■ Self Timer

Using this feature will delay the shutter release for about 10 seconds.

Set to "ON" and press MENU/ENTER Button **19**. Then press Shutter Button **1** to start the self-timer. The Self-timer Indicator LED **3** will start blinking at normal speed the first 7 seconds and will then speed up in the last 3 seconds as a warning to inform you that the shutter is going to release soon. The self-timer function will be cancelled automatically after the shutter is released.

■ Digital Zoom(Only at 1600x1200)

If you would like to capture an enlarged image please set to "ON" and press MENU/ENTER Button **19**. The digital zoom function will be cancelled automatically after the shutter is released.

Note

The digital zoom can only be activated when the TFT LCD Monitor **13** is on. Please note that it will take longer time to save the image into the memory card when using this function.

What You Should Know Before You Take Pictures

Playback Mode Menu

Set the Mode Dial **2** at Playback Mode(▶) and press the MENU/ENTER Button **19**. Use the Up **17** and Down **15** Direction Button to choose the item you would like to make change and use the Right **16** & Left **14** Direction Button to change the setting. And after that please press MENU/ENTER Button **19** to confirm the setting.

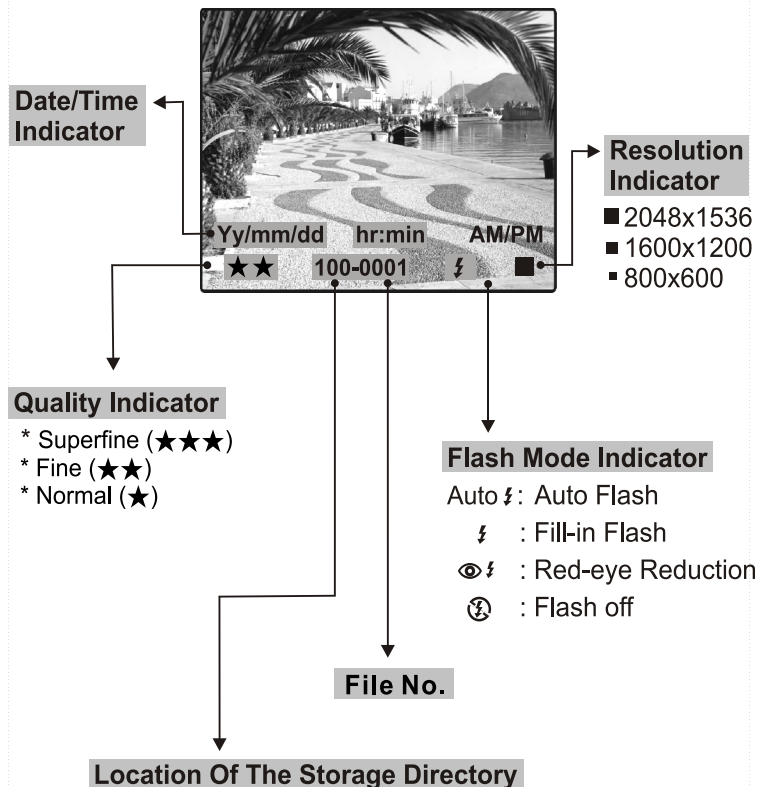
■ Slideshow

With this feature, you can display the stored images by slideshow with intervals of 2, 4, 6, 8 or 10 seconds. To save power, the camera will switch off automatically about 6~7 seconds later after the slideshow if no further operation is proceeded by the user.

■ Picture Info

Set to "ON" if you would like to see the picture information (Please refer to page 21).

What You Should Know Before You Take Pictures



What You Should Know Before You Take Pictures

■ Thumbnail

If you would like to view the stored images in thumbnails (small pictures) please use this feature. Maximum 9 thumbnails can be shown on the TFT LCD Monitor **13**. Use the Up **17** & Down **15** Direction Button to select the picture you'd like to view then press MENU/ENTER Button **19** to view the selected image in normal size. Use Left **14** & Right **16** Direction Button to view the next 9 images if more than 9 images are stored in the memory card.

■ Erase

You can use this feature to erase the stored image by one or all or to format the SmartMedia™ card. Please press the Left Direction Button **14** to switch it to "ON" status and then press MENU/ENTER Button **19** to confirm the setting.

To erase the latest stored image please choose ONE and press MENU/ENTER Button **19** to erase it. To make sure you really want to erase the image, the LCD monitor will show "ARE YOU SURE?" to ask for your final confirmation before the camera proceeds to erase the image. Choose YES and press MENU/ENTER Button **19** if you do want to erase the image or choose NO and press MENU/ENTER Button **19** to get out of the menu.

To erase all stored image please choose ALL and follow the same procedure as above.

To format a new SmartMedia™ card please choose FORMAT and press MENU/ENTER Button **19** to proceed. Please do not format the SmartMedia™ card if it has already been formatted.

■ DPOF

This feature enables you to print out the selected image from 1 to 9 prints. For example, if 2 is selected, the image will be printed out twice. If 0 is selected, there will be no print out.

■ Digital Zoom

Using this feature you can view the selected image in an enlarged size. Please use Direction Buttons to view the parts of the image. The digital zoom function will be cancelled automatically when moving to the next image.

What You Should Know Before You Take Pictures

■ Exit

To exit the Playback Mode Menu.

Video Mode Menu

Set the Mode Dial **2** at Video Mode(**PA**). Use the Right **16** & Left **14** Direction Button to change the setting. And after that please press MENU/ENTER Button **19** to confirm the setting.

■ Recording Time

This feature is to set up the recording time. There are 4 recording times to choose which are 5. 10. 15 or 20 seconds.

Set Up Mode Menu

Set the Mode Dial **2** at Set Up Mode(**S**) and press the MENU/ENTER Button **19**. Use the Up **17** and Down **15** Direction Button to choose the item you would like to make change and use the Right **16** & Left **14** Direction Button to change the setting. And after that please press MENU/ENTER Button **19** to confirm the setting.

■ Date/Time

Using this feature you can change the setting of Date/Time. Please use Left **14** & Right **16** Direction Button to select the part you would like to change and use Up **17** & Down **15** Direction Button to change the setting. After the change is done please press MENU/ENTER Button **19** to confirm the setting.

■ LCD Brightness

Using this feature you can adjust the brightness of the TFT LCD Monitor **13** by using the Left Direction Button **14** to decrease the brightness or the Right Direction Button **16** to increase the brightness.

■ Video Mode

Using this mode to change the video signal output setting. Please select PAL or NTSC.

What You Should Know Before You Take Pictures

■ Beep

You can turn on the beep sound or turn off the beep sound.

■ Reset To Default

If you set to "ON", all the functions you have selected will be over-riden by the default settings.

■ Language

There are six languages to choose which are English, Germany, Chinese, Korean, French and Spanish.

Take Pictures

1. Switch on the power.

There will be a beep sound when the camera is switched on and there will be another beep sound when the camera is ready for shooting. The TFT LCD Monitor **13** will be able to turned on by pressing the LCD Button **20** after the second beep sound.

2. Set the Mode Dial **2** at Recording Mode()

Please press the Macro Button **8** if you would like to take a close-up shot (0.2m~0.6m). If the correct shooting mode (normal or macro) is not selected, the image will be out of focus.

3. Press the Shutter Button **1** HALFWAY until the AF LED **11** stops blinking.

4. Press the Shutter Button **1** down to complete the shooting. The AF LED **11** will blink when the camera is storing the captured image. When the blinking stops you then are able to take another shot.

Note

PLEASE DO FOLLOW ABOVE PROCEDURE WHEN YOU TAKE PICTURES. TO PRESS THE SHUTTER BUTTON **1** HALFWAY IS TO MAKE SURE THE PICTURE WILL NOT BE OUT OF FOCUS.

Note

YOU CAN USE BOTH THE VIEWFINDER **4** OR THE TFT LCD MONITOR **13** TO FRAME THE SHOOTING OBJECT. YET IF MACRO MODE **8** IS SELECTED, IT IS SUGGESTED TO USE THE TFT LCD MONITOR **13**.

Take Pictures

Cautions!

- Please note that this camera is a delicate electronic device and should be kept away from:
 1. Severe changes of temperature and humidity.
 2. Sand, dust or dirt.
 3. Strong vibration.
 4. Direct sunlight exposure.
 5. Placing inside a vehicle which the temperature may rise considerably.
 6. Placing close to a high magnetic field such like loud speakers.
 7. Pesticides.
- Avoid direct sunlight exposure to the lens. Direct sunlight exposure can cause overheating and fading of the CCD (Charge Couple Device).
- If the camera is not to be in use for a long time, remove the batteries, SmartMedia[®] card from the camera to avoid electricity leaking and damage.
- If you'd like to clean the lens or the LCD panel, please use lens cleaning paper and lens cleaning fluid.
- To clean the camera body please use a soft cloth or a mild detergent. Please make sure you are using mild detergents when cleaning the camera body. Strong detergents may cause the paint to flake off.
- The camera will automatically turn off when there are strong shocks or impacts. This is to protect the memory card from damage especially when it's in process of downloading and others.
- There may be a small cracking sound from the flash because of sudden static electricity. Yet it will not effect the camera functions at all.
- The below is a chart of warning indicators that may show on the LCD monitor:

Warning indicator	Description	Solution
NO CARD	<ul style="list-style-type: none"> ● No memory card inside ● The card cannot be read 	<ul style="list-style-type: none"> ● Insert the memory card ● Insert the memory card again
CARD FULL	<ul style="list-style-type: none"> ● Memory capacity of the memory card is full 	<ul style="list-style-type: none"> ● Replace the card with a new card
NO IMAGE	<ul style="list-style-type: none"> ● No images in SmartMedia[™] card 	
PROTECTED CARD	<ul style="list-style-type: none"> ● The card is in the condition of protection 	<ul style="list-style-type: none"> ● Remove the protection sticker on the memory card to make it recordable and readable

Install The Driver

1. If your operation system (OS) is Windows 98/98SE/2000, please follow the below procedures to install the camera driver. Make sure to install the driver before you connect the camera with the PC to download the stored images.

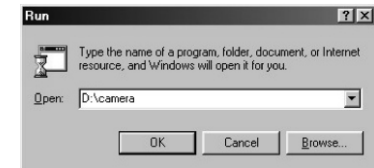
a. Turn on the PC.

b. Insert the camera driver CD into the CD-ROM Drive.



c. Install:

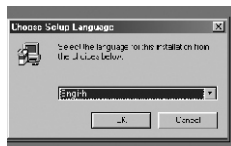
- If the PC is set to auto run the program, simply click on the "Storage Driver (98/98SE/2000)" to install the camera driver.
- If the PC is not set to auto run the program, please go to the Start Menu, click on "Run" and key in "(the CD-ROM Drive):\camera" and then click on "OK" button. For example: D:\camera. When it is done, click on "Storage Driver (98/98SE/2000)" to install the camera driver.



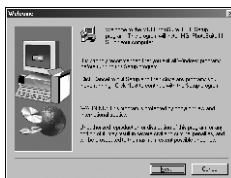
Install MGI PhotoSuite III SE

1. Select the language.

Chinese (PRC), Chinese (Taiwan), English, French (Standard), German, Italian, Spanish, Japanese.



2. A Welcome window will be displayed. Click [Next] to move to the next step.



3. The Software License Agreement window will be displayed. If you agree to this, click [Yes], the window will then move to the next step. If you disagree, click [Cancel] and the install program will be cancelled.



4. Select set up type.

Full : the program will be installed with all the options.
Custom : you can choose what you would like to install.



Install MGI PhotoSuite III SE

5. The Start Copying Files window will display. Click [Next] to start the installation.

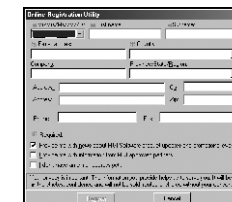


6. The Online Registration window will display. Click [Continue] to the next step.



7. The MGI Registration window .

Register : Move to the on-line registration window .
Cancel : Move to next page without registration .



8. The installation is complete.

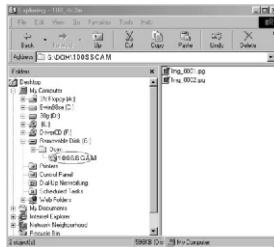


You should restart the computer after finishing the installation.

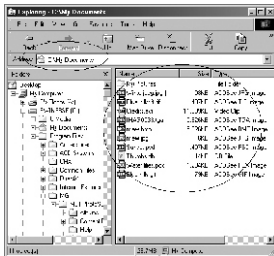
Download The Stored Images To The PC

To download the stored images to the PC follow the procedures below :

1. Set the Mode Dial **2** at PC Connection Mode (📡).
2. Connect the camera with the PC via the USB cable.
3. When you connect the camera to the PC, it will automatically create a new disk named "Removable Disk". All the stored images are to be found in the folder "100SSCAM" which the route is Removable Disk / DCIM / 100SSCAM. PLEASE NOTE THAT THE REMOVABLE DISK EXISTS ONLY WHEN THE CAMERA IS CONNECTED TO THE PC.
I.e. : 3 images in JPG files in "Removable Disk, DCIM /100SSCAM".



4. You can delete the images or copy them to another hard disc in your computer if you wish.
I.e.: Copy the images to Hard Disk ":C / My documents".



Download The Stored Images To The PC

5. Start MGI PhotoSuite III SE and click on [File] and then click on [Open] .

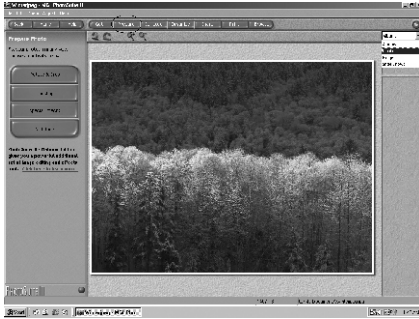


6. Choose the image(s) you would like to preview and edit.
i.e. Choose the images in "My Documents" .

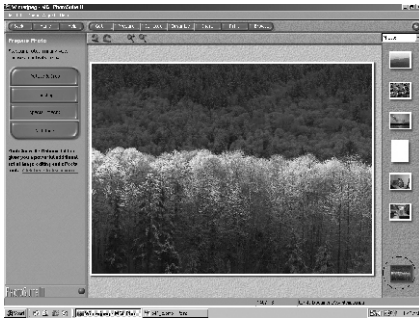


Download The Stored Images To The PC

7. If more than 1 image is selected, please switch to "Photos" which is on the upper right corner of the screen and thumbnails of the selected images will appear.



8. Double click on one thumbnail and it will turn into a normal size image and you can now start editing it by using the editing tool-bars on the left side of the screen.



How To Edit The Stored Image Using MGI PhotoSuite III SE

This software is only compatible with Windows.
To open MGI PhotoSuite III SE, click the [start] → programs → MGI PhotoSuite III SE.



How To Edit The Stored Image Using MGI PhotoSuite III SE

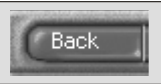
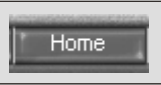
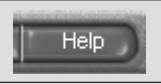
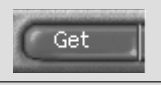
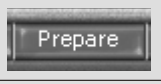
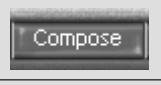
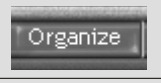
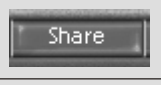
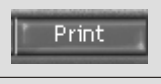

- An introduction to the welcome screen

	<p>Get Get images.</p>
	<p>Prepare A number of photo editing activities can be performed within this module.</p>
	<p>Compose Use your photos in a variety of fun, creative and interesting ways.</p>
	<p>Organize Organize your photos and other media files into albums.</p>
	<p>Share Save your results to show to others.</p>
	<p>Print Print hard copies of photos and projects.</p>

How To Edit The Stored Image Using MGI PhotoSuite III SE

- Introduction to navigation bar

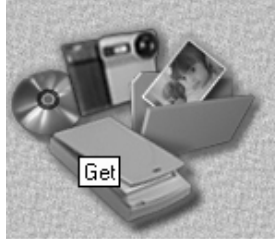


	<p>Back Return to the previous step.</p>
	<p>Home Return to Welcome screen.</p>
	<p>Help Display help window.</p>
	<p>Get Get images.</p>
	<p>Prepare A number of photo editing activities can be performed within this module.</p>
	<p>Compose Use your photos in a variety of fun and interesting ways.</p>
	<p>Organize Organize your photos and other media files into albums.</p>
	<p>Share Save your results to show to others.</p>
	<p>Print Print hard copies of photos and projects.</p>
	<p>Browse Browse the web site.</p>

GET : Get images

- To obtain images from the computer

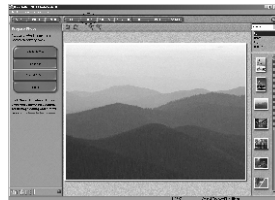
1. To acquire images, Click the large [Get] button on the Welcome screen, or the [Get] button on the Navigation bar.



2. Click [Computer] from the list of options displayed on the activity panel. The Open file selector is displayed. Now select the image file and click [open].



3. The welcome screen will change to the next work step, with the selected image displayed.



- When you obtain images from the digital camera.

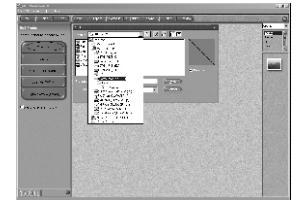
Note

- When you connect a PC to the Camera, use the following sequence :
 1. Turn the Mode to PC mode.
 2. Turn the power on.
 3. Connect the USB cable.

1. To acquire images, click the large [Get] button on the Welcome screen, or the [Get] button on the Navigation bar.

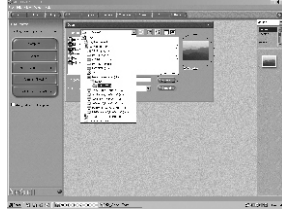


2. Click [Computer] from the list of options displayed on the activity panel. The Open file selector is displayed. Click [Look in :] to choose Removable Disk (:) and click [open] for the open file window to be displayed.

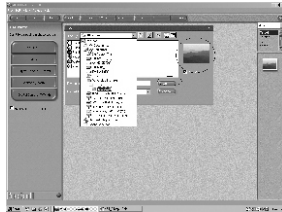


How To Edit The Stored Image Using MGI PhotoSuite III SE

3. Select [Removable Disk (:)] and select folder . Then select image and click [Open].



4. The welcome screen will change to [prepare] work step, with the selected image displayed.



How To Edit The Stored Image Using MGI PhotoSuite III SE

• Acquiring images from an Album.

1. To acquire images, click the the large [Get] button on the Welcome screen, or the [Get] button on the Navigation bar.



2. Click [Album] from the list of options displayed on the activity panel. After selecting Album on the ① Choose a photo album, click an image in the album and click [Open].



3. Choose the Album you want.

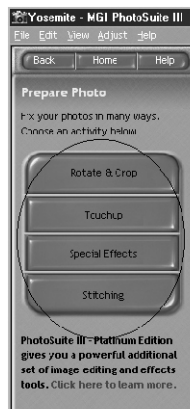


How To Edit The Stored Image Using MGI PhotoSuite III SE

4. Choose a photo that you want and open it.



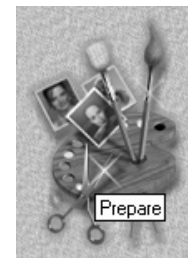
5. The Welcome screen will change to the [prepare] work step, with the selected image displayed.



How To Edit The Stored Image Using MGI PhotoSuite III SE

PREPARE

When the image is loaded, Prepare screen appears automatically.



•Menu of [PREPARE] step

•Rotate & Crop

You can rotate, flip, crop or perform many other editing features.

•Touchup

Remove Red eye, Remove Scratches etc.. are available in this menu.

•Special Effects

A number of special effects can be applied.

•Stitching

Join a series of photos together to create a sweeping panoramic effect.



COMPOSE

Add Text, Compound image etc...



• Menu of [COMPOSE] steps

• **Collage** : A collage consists of several photos or sections of photos arranged together on a common background.

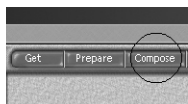
• **Photo Layouts** : The Photo Layout activity includes many collage and layout options.

• **Card & tag** : Use your photos to create items such as Gift Tags, Greeting Cards, Invitations, Postcards, and Sports Cards.

• **Calendars** : Use your photos to create a variety of calendars (monthly, quarterly, seasonal, yearly).

• **Collections** : Photos can also be used to create a variety of items for business purposes.

Add frames and border effects to your photos with the predefined templates.



ORGANIZE

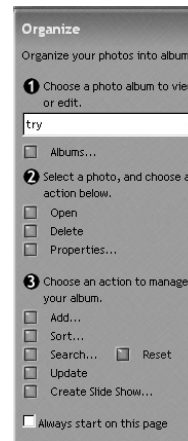
Organize your photos and other media files into albums.



• Menu of [ORGANIZE] step

1. Choose a photo album to view or edit
Select Album : To create an Album, click [Organize] in the welcome screen or navigation bar.
Album...: Open Master Album.
2. Select a photo, and choose an action below.
Open : Open selected image.
Delete : Delete selected image.
Properties...: View image information.
3. Choose an action to manage your album.
Add : click [Add] to add an image to an album.
Sort : click [Sort] to Sort saved images.
Search : click [Search] to Search saved images.
Reset : click [Reset] to reset the setting.
Update : click [Update] to update images.
Create Slide Show...: Click [Create Slide Show] to create a Slide Show.

Always start on this page : If you select this option, the program will start in [Organize].

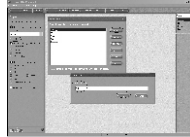


•Creating an Album

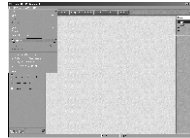
1.To create an Album, click the large Organize button on the Welcome screen, or the Organize button on the Navigation bar.



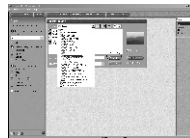
2.Click [Album...]. In ① Choose a photo album to view or edit. The Master Album window will be displayed, then click [New..]. Put a new Album name in the New Album window and click [OK]. A new album will now be created. Now the album you create is empty.



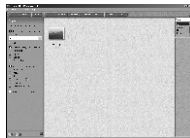
3.Add photos to your album.
Click /File/Add Photo



4.Choose the photo you want.
And click [Add].



5.This is your album.



SHARE

•Saving images

1.Saving or sharing images.



•Menu of [SHARE] step

Save

To save the active file according to its current name and path.

Save As

To assign a new name or path to the file.

Send E-mail

e-mailing images.

Slide Show

Viewing images as a slide show.

2.Click [SAVE] and the Save Project window will be displayed. Enter the file name and click [Save(S)] to save an image



PRINT

•Print images

1.You can print images.

•Menu of [PRINT] step

Print

Printing images.

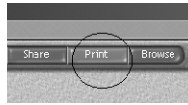
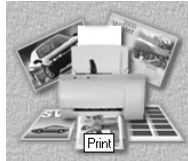
Print Multiples

Print multiple copies of a photo or project, or one copy of each of the photos included in an album, according to predefined template.

2.Choose a printer, choose an orientation, choose the print size, choose the number of copies.You can then print the images.

NOTICE:

Check your printer setup first..



Reference

For more information, please refer to the Help file in [Help → MGI PhotoSuite III help].

Symptoms	Causes	Solutions
The power won't turn on	<ul style="list-style-type: none"> The batteries are out of power The AC power adapter is not well connected or damaged 	<ul style="list-style-type: none"> Replace the batteries with new ones Make sure the AC power is connected and it's not damaged
The power turns off during use	<ul style="list-style-type: none"> The batteries are out of power Auto power off The memory card is taken out when in process of saving pictures The adapter has not been connected properly 	<ul style="list-style-type: none"> Replace the batteries with new ones Switch on the Power Do not remove the memory card while you save the image Connect the adapter correctly
The battery power is draining quickly	<ul style="list-style-type: none"> The external temperature is too cold The camera is using both old and new batteries 	<ul style="list-style-type: none"> Keep the camera away from extreme temperatures Replace all batteries with new ones
The camera does not take pictures when the shutter button is pressed	<ul style="list-style-type: none"> The camera is not set at Recording Mode SmartMedia™ card is not inserted The memory card has not been formatted The memory card is damaged The batteries are weak The power has not been switched on 	<ul style="list-style-type: none"> Set the Mode Dial at Recording Mode After turning off the camera, insert the card Format the card Replace the memory card with a new one Replace the batteries with new ones Switch on the power
The focus cannot be adjusted	<ul style="list-style-type: none"> You have selected the incorrect shooting mode 	<ul style="list-style-type: none"> If the subject is closer than 0.6m, select macro mode and if the subject is beyond 0.6m, select normal mode
The flash does not fire	<ul style="list-style-type: none"> The camera flash is turned off 	<ul style="list-style-type: none"> Set the flash mode to Auto Flash or Fill-in Flash mode
Incorrect date / time is displayed		<ul style="list-style-type: none"> Reset Date/Time
Camera fails to work by any button or switch		<ul style="list-style-type: none"> Remove the batteries and reload them

Before You Contact The Service Center

Symptoms	Causes	Solutions
The card error indicator is on with the memory card inserted	<ul style="list-style-type: none"> The memory is not readable or recordable 	<ul style="list-style-type: none"> Format the memory card
There is something wrong with the color of the captured image	<ul style="list-style-type: none"> White Balance is not set properly 	<ul style="list-style-type: none"> Reset white balance.
The picture is too bright or too dark	<ul style="list-style-type: none"> There is excessive exposure 	<ul style="list-style-type: none"> Reset exposure compensation
The TFT LCD monitor is not clear	<ul style="list-style-type: none"> The LCD monitor plastic cover is dirty 	<ul style="list-style-type: none"> You should clean the LCD cover
The image is not displayed on the external monitor	<ul style="list-style-type: none"> The video cable is not connected to the camera or external monitor 	<ul style="list-style-type: none"> Check the cable connection
The camera cannot download images to the PC	<ul style="list-style-type: none"> Cable is not connected properly Camera is off There are no batteries or the adapter is not well connected The Mode Dial is not set at PC Connection Mode OS is not Window 98/98SE / 2000/ME/XP or PC is not equipped with USB port USB driver is not installed 	<ul style="list-style-type: none"> Check the cable connection Turn on the power Load new batteries or check the AC power adapter connection Set the Mode Dial at PC Connection Mode Install Windows 98/98SE/2000/ME/XP and USB Port Install USB Driver

Specifications

Image Sensor	2.1-Mega-pixel CCD
Lens	f=6.8mm (35mm film equivalent : 43mm) F2.8 / F4.0 / F5.6 / F8.0
Digital Zoom	Record mode : 2x, Play mode : 2x
Viewfinder	Real image optical viewfinder
LCD Monitor	1.5" color TFT LCD
Focusing	Auto focusing
Focusing Range	Normal : 0.6m ~ infinity, Macro : 0.2 ~ 0.6m
Shutter	Mechanical and Electronic shutter
Shutter Speed	1/4 ~ 1/1,000 sec
Exposure	Program AE / Exposure compensation $\pm 1.8EV$
ISO Equivalent	100,200 (Automatic)
White Balance	Auto / Manual (Daylight, Fluorescent, Tungsten)
Flash	Auto flash / Fill-in flash / Red-eye reduction / Flash off
Flash Range	0.5 ~ 3.0m
Self-timer	10 seconds
Video Clips	Size : 320x240 Recording time : up to 20 sec
Storage	SmartMedia™ card
File Format	JPEG (DCF compliant), DPOF, AVI (Motion JPEG) compliant
Image size	2048x1536(By interpolation), 1600x1200, 800x600
Storage Capacity (8MB)	Large : Super fine 6 ± 1 , Fine 14 ± 1 , Normal 22 ± 2 images Small : Super fine 28 ± 2 , Fine 59 ± 3 , Normal 94 ± 4 images
Image Play	Single image / Thumbnails / Slideshow
Interface	Digital output connector : USB Video output : NTSC/PAL (user selectable) AC power input connector : 3.0V/2.0A
Power Source	2xAA Alkaline (high capacity recommended) / Ni-MH batteries AC adapter (optional)
Dimensions(WxHxD)	103x69x42.7mm / 4.0x2.7x1.7inch
Weight	200g / 7.1oz (without batteries and card)
Software	Camera driver, MGI PhotoSuite III SE



Specifications

System Requirements

FOR WINDOWS	PC with processor better than MMX Pentium 233MHz Windows 98/98SE/2000/ME/XP Minimum 64MB RAM 100MB of available hard-disk space USB port CD-ROM drive 800x600 pixels, 16-bit color display compatible monitor. (24-bit color display recommended)
FOR MACINTOSH	Power Mac G3 or later Mac OS 9.x Minimum 64MB RAM 50MB of available hard-disk space USB port CD-ROM drive

Technical Support Hot Line:

Toll Free In the USA & Canada

1-866-522-6372

Toll Free In Europe

UK: 0800-169-6482

BELGIUM: 0800-787-57

FRANCE: 0800-917-599

GERMANY: 0800-1800-563

SPAIN: 900-973-195

ITALY: 800-781-883

All Other Countries - Toll

31-53-482-9779